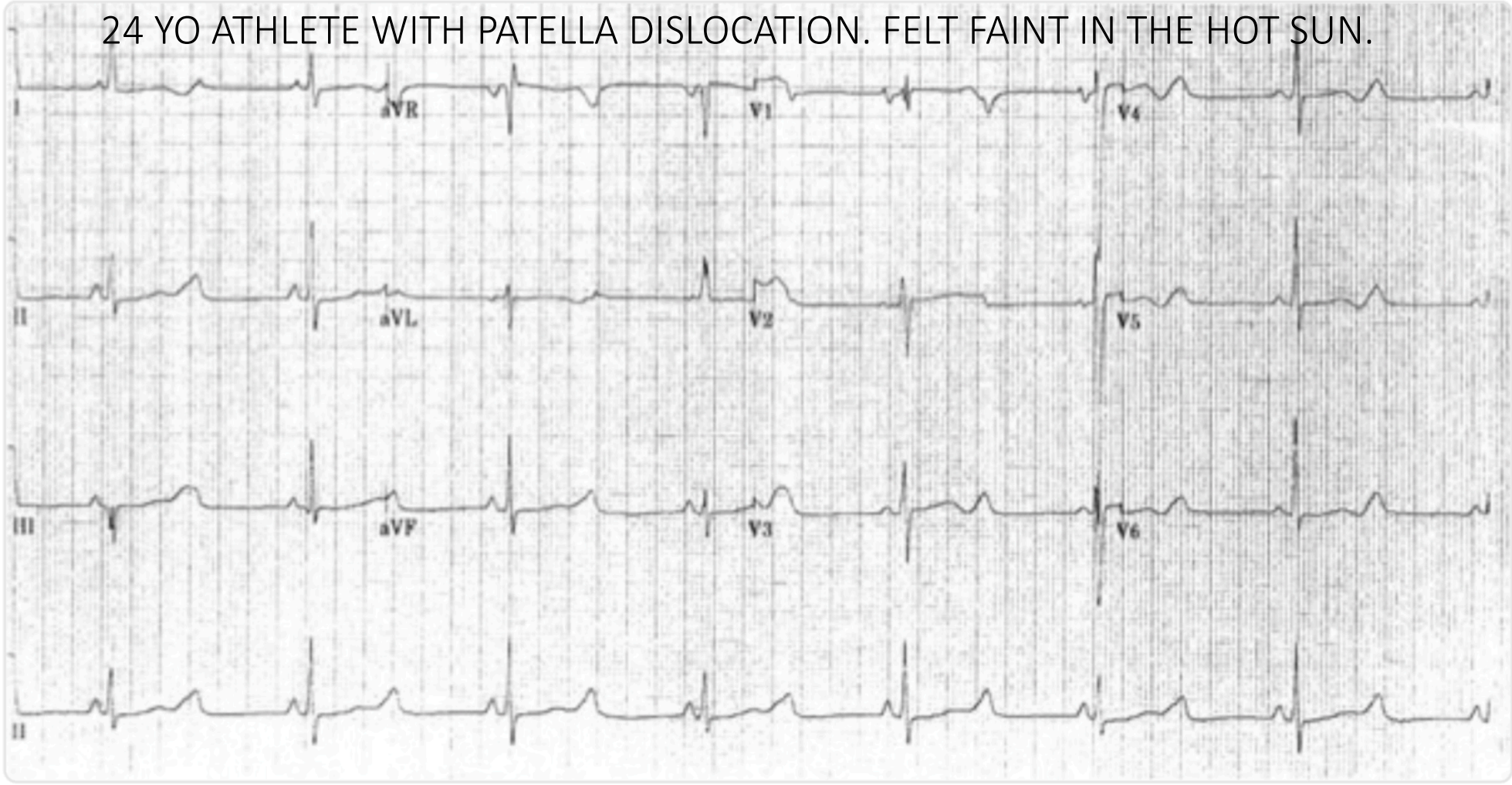


ECG

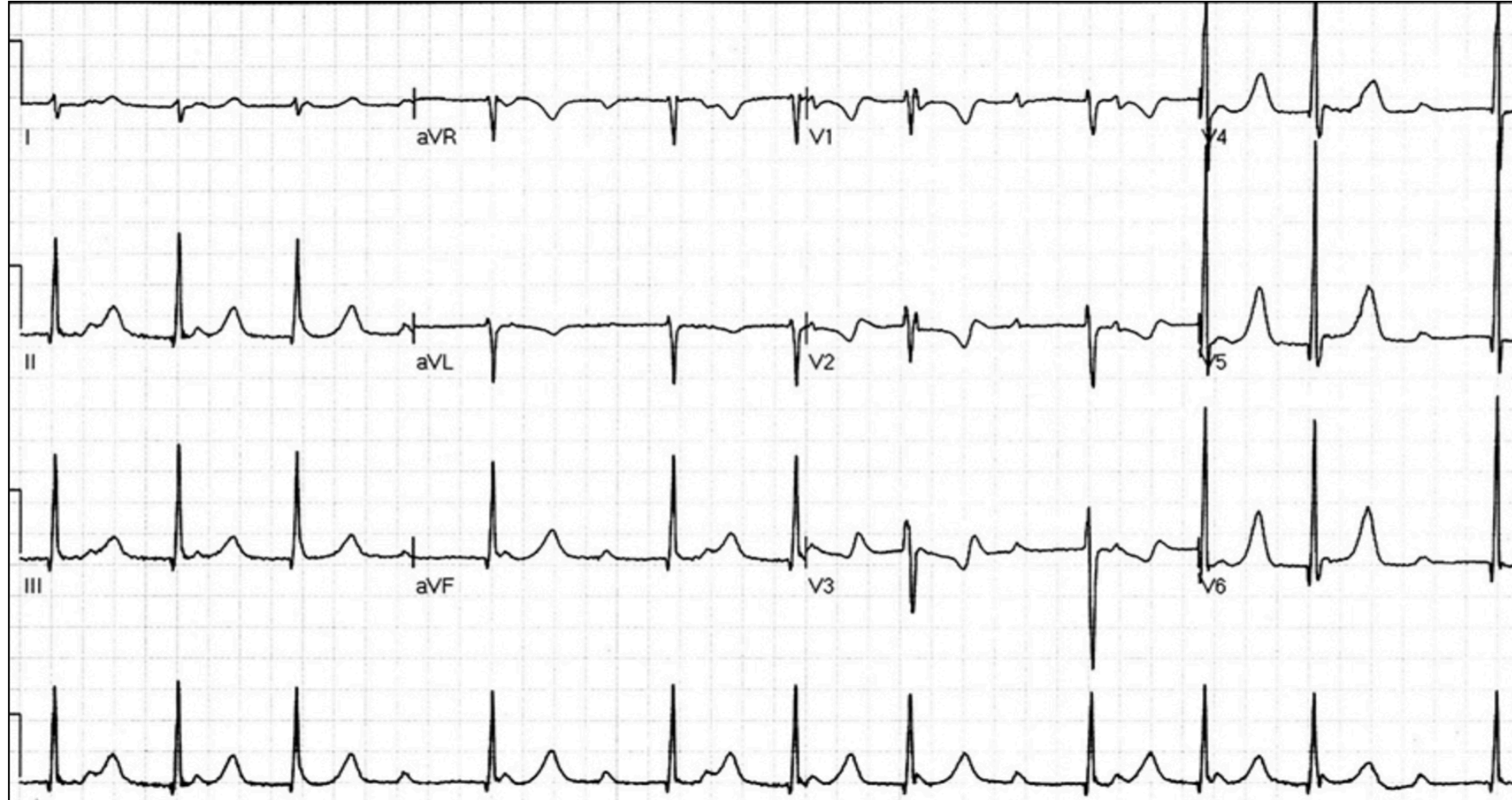
For each ECG give

1. Diagnosis
2. How would you manage the patient

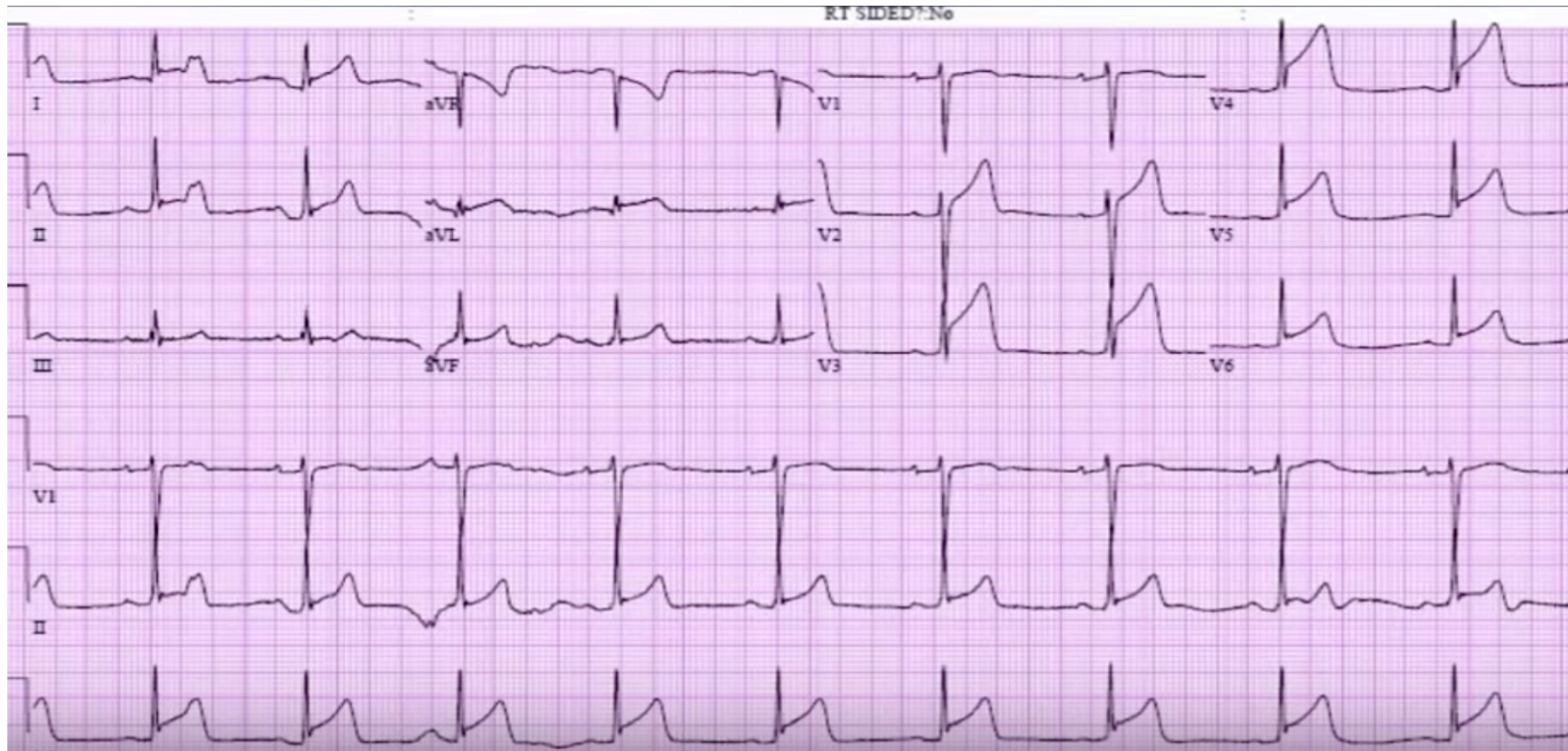
24 YO ATHLETE WITH PATELLA DISLOCATION. FELT FAINT IN THE HOT SUN.



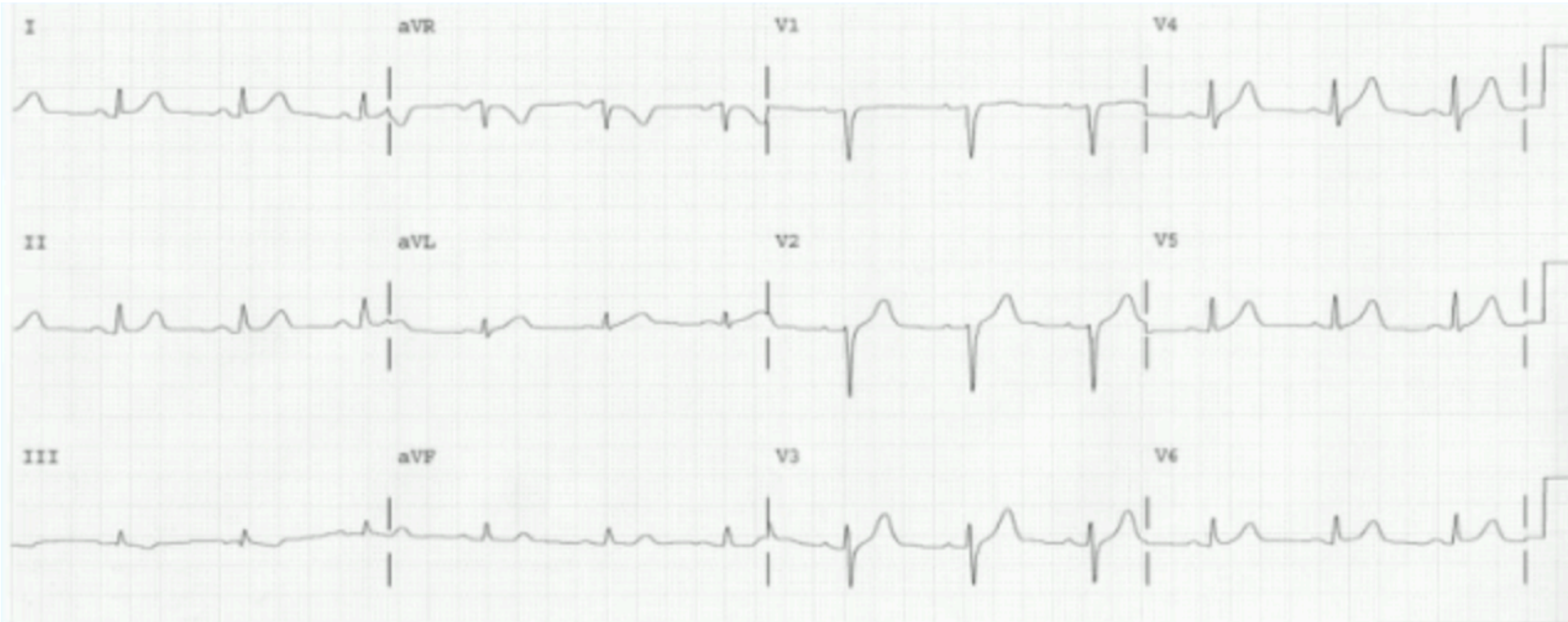
A 24 yo soccer player comes to see you with ankle pain and this is his ECG



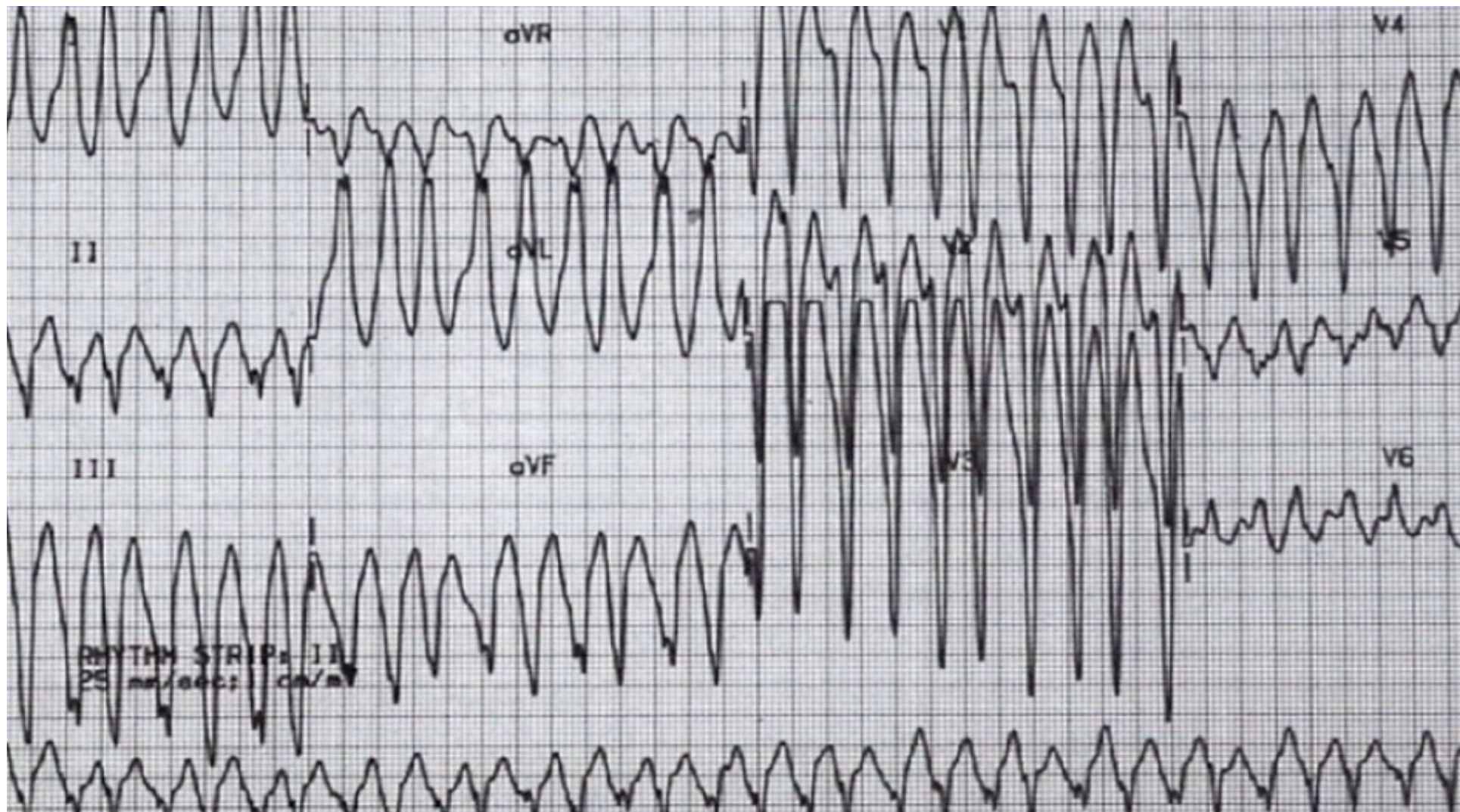
23 yo with 6 hours central sharp chest pain and left arm heaviness.



40 yo male with burning epigastric pain- relieved by mylanta



8 A 32 year old woman presents with palpitations and an episode of syncope.



A 19 yo woman with palpitations and BP 125/60

